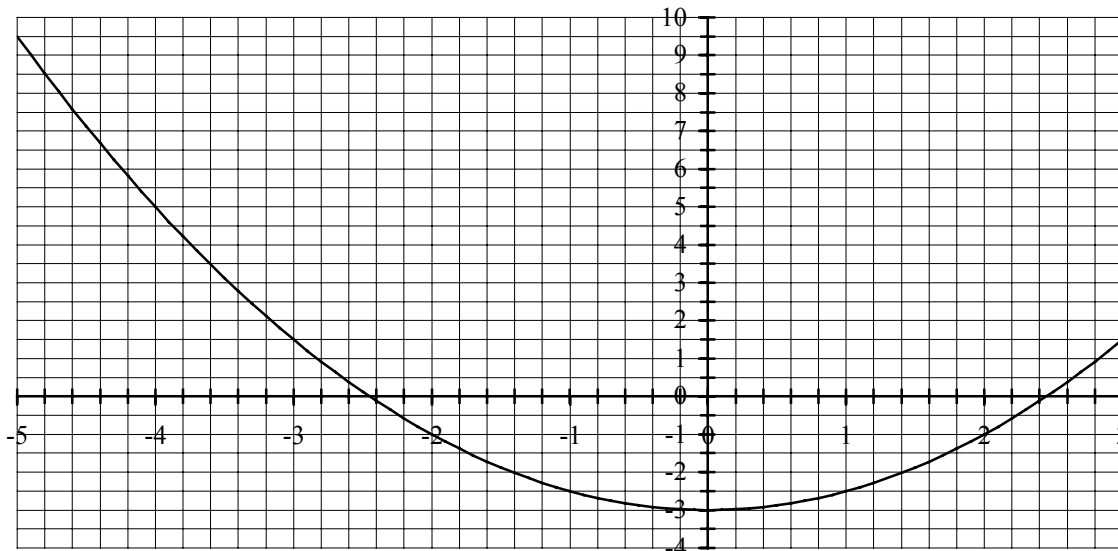


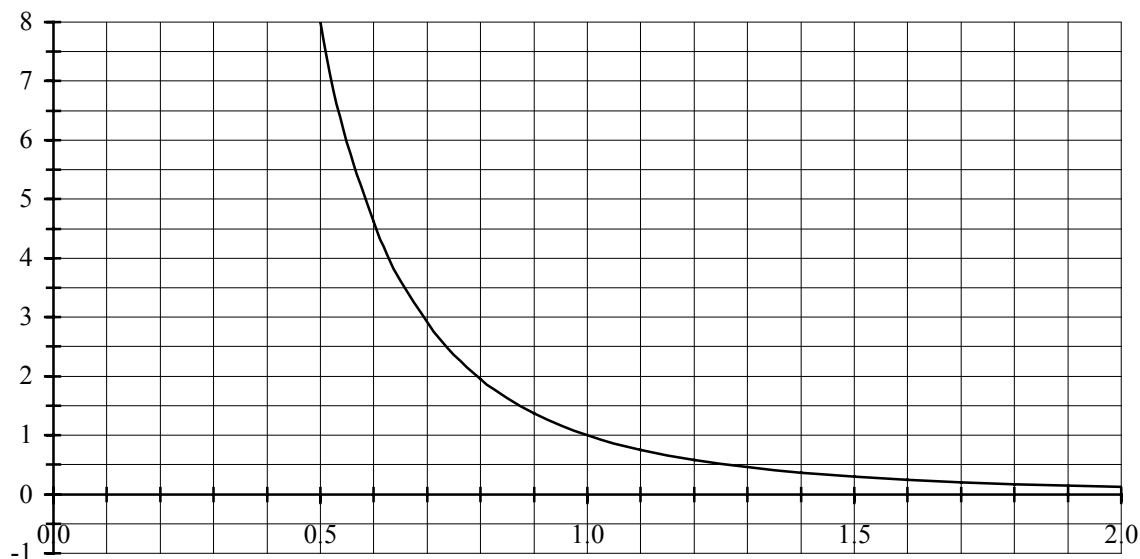
Série 8, compléments. Dessinez les tangentes des fonctions f en a et écrivez leur équation.

1 / 2

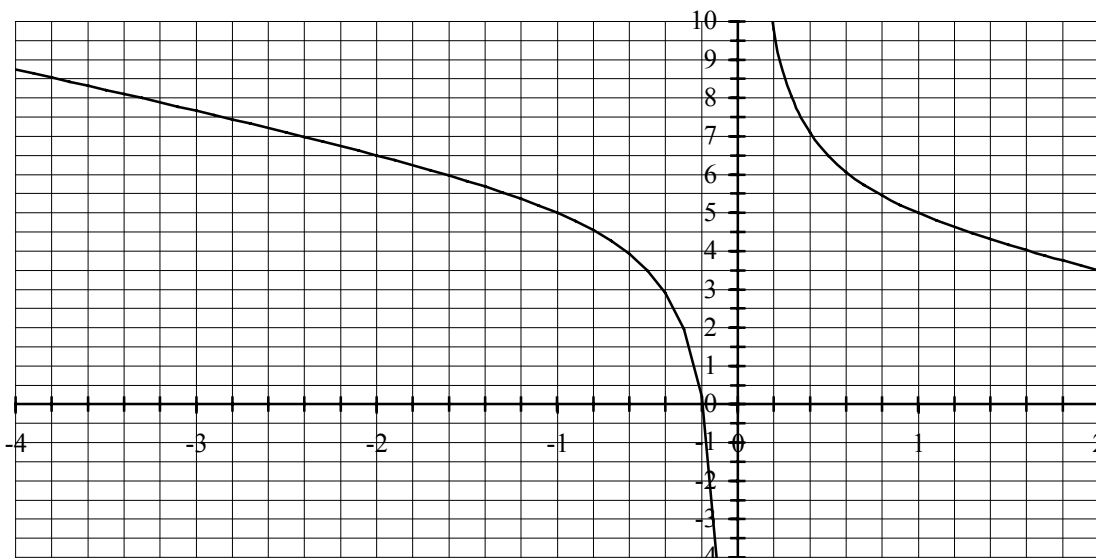
1.1 $f(x) = \frac{1}{2} \cdot x^2 - 3$ $a = 2$ puis $a = -4$



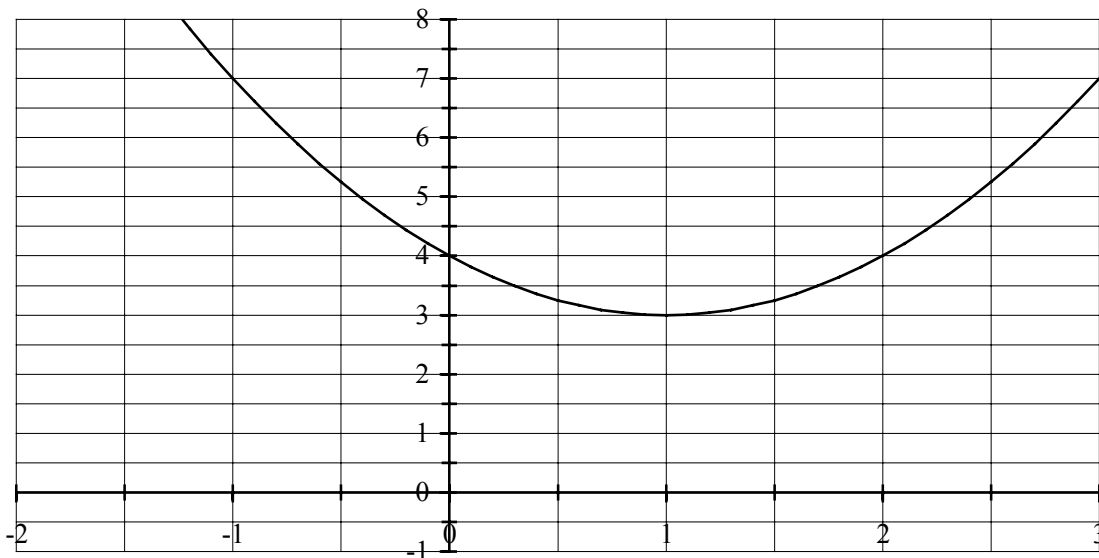
1.2 $f(x) = \frac{1}{x^3}$ $a = 1$



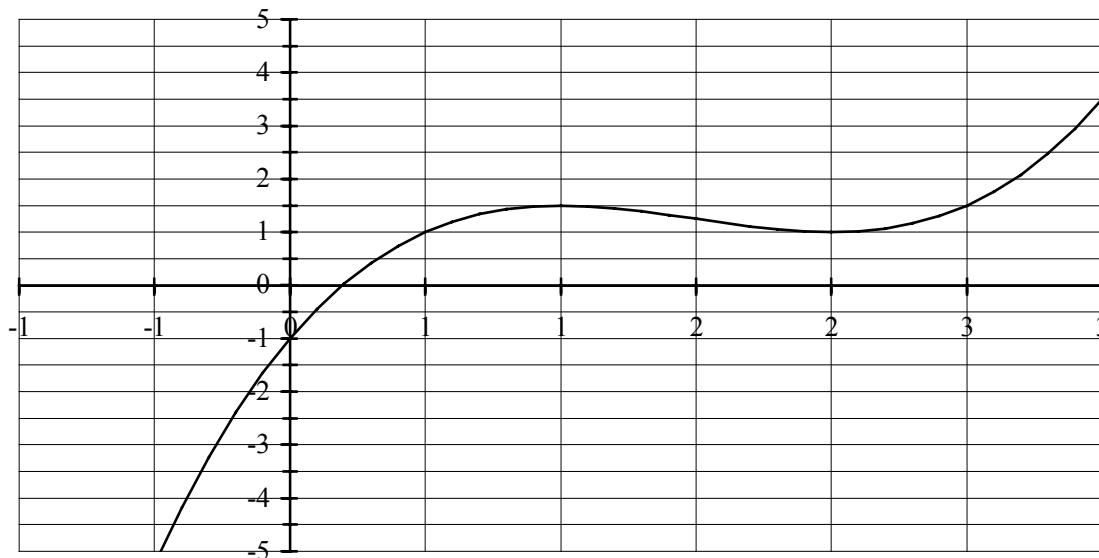
1.3 $f(x) = 5 - x + \frac{1}{x}$ $a = -1$



2.1 $f(x) = x^2 - 2x + 4$



2.2 $f(x) = x^3 - \frac{9}{2}x^2 + 6x - 1$



2.3 $f(x) = x + \frac{1}{x}$

